



Nepal and the Himalaya is certainly one of the most exotic Heliski spots in the world. Heli-skiing in the Annapurna region means skiing in probably the most impressive and fascinating mountain region of the world. Just the helicopter flight from Pokhara every morning straight up to the heli-skiing areas of the Annapurna region is already a very unique experience. Powder runs in heights beyond 5000m are everything else than unusual and create unforgettable memories. The Annapurna south region has its own local micro-climate, thus we can expect thundershowers in the late afternoons providing fresh snow pretty much every day. Our base is in Pokhara at around 800m elevation where we stay in the Temple Tree Hotel at nice summerlike beach weather and winter being within eyeshot just some flight minutes away!

#### Region and snow information:

The Annapurna south region north of Pokhara is one of the few areas where we can constantly expect new snow and powder conditions. Thanks to its micro-climate which is common only in this region, the area often gets new snow in the late afternoon transforming the heliski area into a true powder paradise day after day again. We reach our base Pokhara with a 30min flight from Kathmandu. The best travel period is from end of February to beginning of April.

#### Maximize your Heli-Skiing time with our small groups:

Small group's means less waiting time between the runs, so you can make the most out of your time at the mountain. By using smaller, more agile helicopters you can explore the majestic playground in a very extensive and efficient way. We work with max. 4-5 participants per mountain guide.

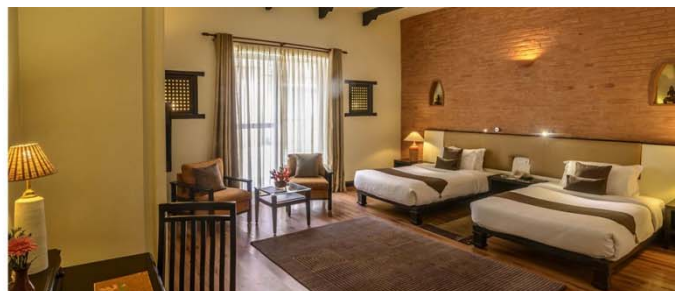
#### Hotel Temple Tree Resort in Pokhara and Gokarna Resort & Spa in Kathmandu:

In Pokhara we stay at the beautiful Temple Tree Resort. The hotel offers western standard combined with the distinctive architecture and culture of the western Himalaya. The resort is located at the lake shore of Lake Phewa from where you can enjoy a wonderful view over the lake and the Annapurna region. The hotel offers nice rooms with western comforts.



Heli Guides AG / Guidemonteroa S.R.L. - Kreuzlingerstrasse 5 / Fraz. Tschaval 5 - CH-8574 Lengwil-Oberhofen / I-11020 Gressoney la Trinité,  
 Phone. DE: +49 (0)89 215536560 – Phone CH: +41 (0)71 688-7000 – Phone I: +39 0125 366 019  
 Lengwil-Oberhofen CH / Firmnummer: CH-440.3.027.609-1 / Gressoney la Trinité PARTITA I.V.A. 01076110079  
 E-Mail [Info@Heli-Guides.com](mailto:Info@Heli-Guides.com) / [Info@guidemonterosa.com](mailto:Info@guidemonterosa.com) - Web: [www.Heli-Guides.com](http://www.Heli-Guides.com) / [www.Guidemoterosa.com](http://www.Guidemoterosa.com)





In Kathmandu we stay at the Gokarna Resort & Spa which is situated just 10km away from Kathmandu downtown and the Tribhuvan International Airport. The area was historically the private royal hunting area of the king of Nepal. The superior rooms of the hotel are well furnished with western comforts. The hotel offers several restaurants with different flavours for your dining experience.

#### Itinerary:

- Friday - Saturday: Individual travel from Europe for example Frankfurt/London/Zurich/Vienna – Kathmandu. Pick up at the airport and transfer to the Gokarna Resort. Sightseeing trip Kathmandu.
- Sunday: Around mid day transfer flight from the Airport of Kathmandu to Pokhara (*included in the Package*) Safety briefings and material check. Dinner is served around 7:30 p.m.
- Monday - Friday: Terrain selection is determined by the guides and pilots and is based on avalanche assessment, weather and the group ski level. Skiing continues throughout mid-day. In case of bad conditions alternative program is available. Dinner is served around 7:30 p.m.
- Saturday: The morning can be used as back up for another heliski day. Around mid-day transfer flight to Kathmandu and individual traveling back home.

#### The Heliski Day:

Due to the rising temperatures throughout the day and thundershowers in the afternoon, an early start is necessary.

- ◆ From 06:00 a.m. Breakfast
- ◆ From 07:00 a.m. Take off from the airport with the helicopter
- ◆ Approx. 01:00 p.m. Return to the hotel
- ◆ Approx. 07:00 p.m. Dinner

#### Additional helicopter flight hours:

If groups exceed the flight time included in the package extra flying is charged at the rate of approx. Euro 2500,00 per hour which is divided by the participants flying.



Heli Guides AG / Guidemonterosa S.R.L. - Kreuzlingerstrasse 5 / Frasz. Tschaval 5 - CH-8574 Lengwil-Oberhofen / I-11020 Gressoney la Trinité,  
 Phone. DE: +49 (0)89 215536560 – Phone CH: +41 (0)71 688-7000 – Phone I: +39 0125 366 019  
 Lengwil-Oberhofen CH / Firmennummer: CH-440.3.027.609-1 / Gressoney la Trinité PARTITA I.V.A. 01076110079  
 E-Mail [Info@Heli-Guides.com](mailto:Info@Heli-Guides.com) / [Info@guidemonterosa.com](mailto:Info@guidemonterosa.com) - Web: [www.Heli-Guides.com](http://www.Heli-Guides.com) / [www.Guidemonterosa.com](http://www.Guidemonterosa.com)





**Refund of helicopter flight hours:**

If the groups are unable to use the included runs in the package due to bad weather conditions, we refund Euro 50.00 / run / person (guaranteed are 4 flights / day / 5 skiing days). No refund will be done in case of illness, accident, deficiency of physical shape – lack of condition, bad skiing level, late arrival and breaks during the skiing days.

**Helicopter:**

Airbus Helicopter AS 350 B3

**Requirements:**

You will need to be a safe off-piste skier in all conditions, and fit enough to cope skiing off-piste 7,000 vertical meters a day. Please note that all heli-skiing activities take place at high altitude. For group bookings, we can take care individually of the skiing level.

**Additional costs:**

Flights to / from Kathmandu; additional helicopter hours (*see additional helicopter hours*), drinks, alternative activities and all other not included services.

**Services included:**

- Mountain guide service IFMGA for the heliski days
- 12 helicopter flying hours for a group of 8-10 participants
- 6 x accommodation in double room and full board (3 meals a day) in Hotel Temple Tree Resort in Pokhara and surrounding restaurants.
- 1 x accommodation in double room and half board in Hotel Gokarna Resort & Spa in Kathmandu
- Roundtrip flight Kathmandu – Pokhara - Kathmandu
- All necessary airport transfers
- ABS backpack, avalanche shovel, probe and transceiver for the duration of the trip
- National park fees and permits in Nepal
- Organization of flights and visa if required

**Dates and Prices per person in double room and full board/half board in the hotels in a group of 8-10 participants:**

- 16.03 - 23.03.2019 Euro 7900,00
- 23.03 - 30.03.2019 Euro 7900,00

Heli Guides AG / Guidemonterosa S.R.L. - Kreuzlingerstrasse 5 / Franz. Tschaval 5 - CH-8574 Lengwil-Oberhofen / I-11020 Gressoney la Trinité,  
 Phone: DE: +49 (0)89 215536560 – Phone CH: +41 (0)71 688-7000 – Phone I: +39 0125 366 019  
 Lengwil-Oberhofen CH / Firmennummer: CH-440.3.027.609-1 / Gressoney la Trinité PARTITA I.V.A. 01076110079  
 E-Mail [Info@Heli-Guides.com](mailto:Info@Heli-Guides.com) / [Info@guidemonterosa.com](mailto:Info@guidemonterosa.com) - Web: [www.Heli-Guides.com](http://www.Heli-Guides.com) / [www.Guidemoterosa.com](http://www.Guidemoterosa.com)

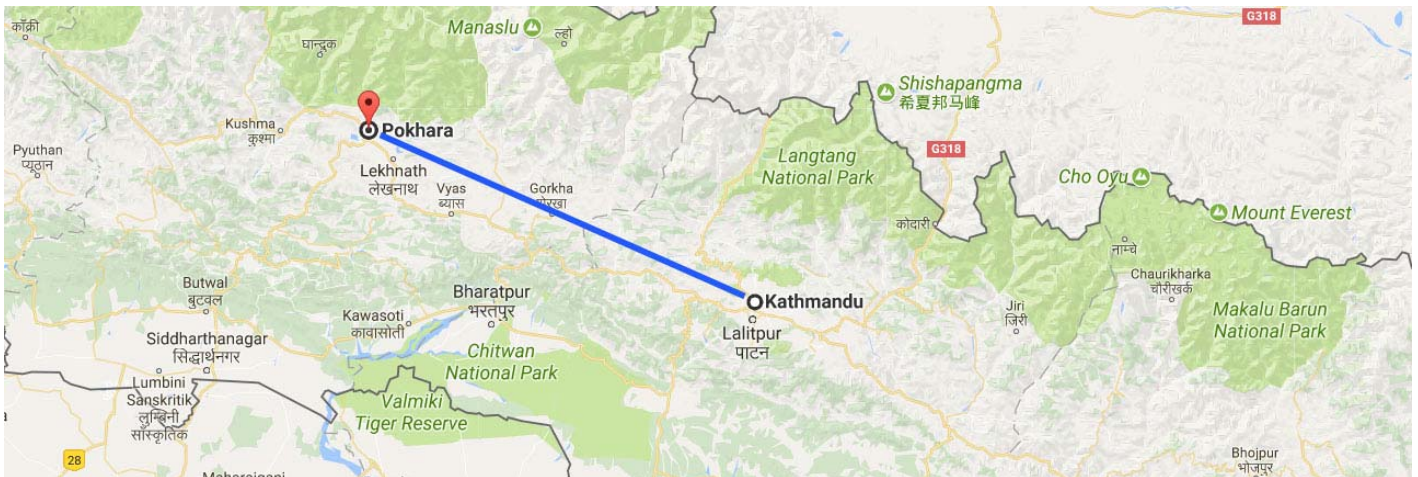


**Arrival:**

Flight options like for example via Abu Dhabi, Istanbul, Doha... (for example with Qatar Airways, Turkish Airways, Ethiad): Frankfurt/Zurich/Vienna - via Abu Dhabi (AUH), Doha (DOH) or Istanbul (IST) - Kathmandu (KTM)



Transfer flight: Kathmandu – Pokhara - Kathmandu (included in the package)



**Meeting point:**

On the arrival day in the Kathmandu airport or by appointment with the offices.

**Cancellation insurance and health insurance:**

We strongly recommend a trip cancellation insurance, baggage insurance as well as travel and accident insurance.

**Documents, Visa:**

All countries have their own entry and visa requirements; we will gladly assist you in obtaining the visa.



**Safety equipment, avalanche equipment:**

All participants get in Nepal an ABS backpack, Avalanche transceiver, shovel and probe for the period of heliski activities.



Heli Guides AG / Guidemonteroa S.R.L. - Kreuzlingerstrasse 5 / Fraz. Tschaval 5 - CH-8574 Lengwil-Oberhofen / I-11020Gressoney la Trinité,  
Phone. DE: +49 (0)89 215536560 – Phone CH: +41 (0)71 688-7000 – Phone I: +39 0125 366 019  
Lengwil-Oberhofen CH / Firmenummer: CH-440.3.027.609-1 / Gressoney la Trinite PARTITA I.V.A. 01076110079  
E-Mail [Info@Heli-Guides.com](mailto:Info@Heli-Guides.com) / [Info@guidemonterosa.com](mailto:Info@guidemonterosa.com) - Web: [www.Heli-Guides.com](http://www.Heli-Guides.com) / [www.Guidemoterosa.com](http://www.Guidemoterosa.com)

